



Dane County Master Gardener Newsletter

October, 2009

Dane Co UW Extension
1 Fen Oak Ct

Volunteer Hours Reporting Forms, etc.

Dear Master Gardener Volunteer

Thank you to those who have sent in the volunteer hours form. On page 7 is the list of those reporting hours.

October 1 was the deadline for sending in your volunteer hours if you are certifying as a Master Gardener Volunteer or recertifying. However, do not despair if you haven't sent them in yet. We can send them into the state coordinator for a few weeks past the deadline. I'm not encouraging you to procrastinate, but... we would rather have your hours turned in late than not at all.

Mentor Program

There will be a meeting of all the mentors (but not mentees) on November 12 at 6:30 p.m. at the Extension Office Building. We will talk about the pluses and minuses of the program and how we can make it better. It should take about an hour. Please rsvp to munson@co.dane.wi.us or call 224-3721. If you can not make it to the meeting, please email Lisa Johnson what your experiences have been with the program, johnson.lisa@co.dane.wi.us. We would also be interested to learn if you would like to continue as a mentor for the new 2010 Master Gardeners.

Specialized MG classes

We have completed both sets of specialized training this fall and had many great educational experiences with our various presenters. Thank you to all of you who participated in taking the classes and had the opportunity to expand your horticultural knowledge.

We are very fortunate in the Madison area to have access to so many amazing specialists who are eager to share their horticultural expertise.

Rain Garden at the Extension Office was planted on Saturday, October 3. It was a bit of a muddy mess, but the plants are in and we look forward to learning more about how the rain garden functions and what plants do best.



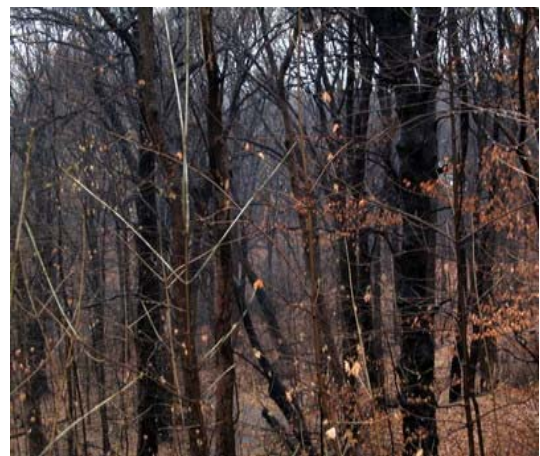
Anne Walker - Medicinal Herbs

Madison Area Master Gardener Association Program

**October 20th Alicia Ashman
Library, 6:30 p.m.**

**Last Workday, Woodland clean-up and Horticulture garden clean-up
Saturday, November 7th, 12:30 to 3:00 p.m.**

Still need to meet your Extension garden hours requirement? Come on Saturday, November 7th to work on renovating the Lyman Woods area. We are trying to renovate this oak woods by removing buckthorn, honeysuckle and garlic mustard. We will also be cleaning up the children's garden and protecting various shrubby plants from rampaging rabbits. Bring loppers if you have them, wear extra clothing to start out. Herbicide sprays will be used in some areas.



Weekly indoor plant waterer needed

Do you like indoor plants and have an hour or so you can come over to the Extension Office and water our indoor plants? We are looking for 2 weekly helpers, the 2nd and the 4th week of each month, to do plant care and watering. Call Ann, 224-3721



Garden Musings by Ann Munson

Everything in nature is cyclical and gardens are especially susceptible to the fate of nature's and man's whims. I just heard about the closing of Foxfire Botanical Gardens near Marshfield. Apparently they closed due to a lawsuit and the gardens will be permanently closed. This is such a shame as it was a wonderful garden and a great tourist destination. The lawsuit has to do with liens and judgments and money owed. Ugly business for a beautiful garden. Those who have visited, will remember the peaceful paths around the lake, beautiful rock formations artistically planted with hostas and other plant treasures, the moon gate and the Japanese tea house.

This time of year I am always conflicted. I start to panic that soon the gardening season will be over, yet I look forward to not feeling guilty because I am not out there pulling the weeds that have grown 4 feet tall. I will miss being able to walk outside and pick a cherry tomato as a snack, but will have more time to work out at the gym (gardening as exercise doesn't really get your heart rate up).

I can't say that the vegetable garden was a great success. I got 3 teeny eggplants, the hot peppers weren't hot, the green peppers were small. However the leeks, peas and potatoes were wonderful. Tomatoes got late blight just when they finally started to look good and ripen. I'm thinking come next year I going to try growing vegetables in containers. I was amazed at the small size of the root systems when I pulled up the plants. I have a fairly good clay soil but maybe it was too heavy for those roots to really reach out.

The Madison Area Master Gardeners Association is in the process of planning the annual state conference for 2011. If you have any ideas for speakers you would like to hear—nationally known would be good if they don't cost too, too dearly, let any one on the Board, including myself know your recommendations. If you would like to help on the committee that is planning the conference, again let us know.

Everyone at the Extension Office is nervously waiting to hear how severe the budget cut backs will be for the 2010 budget. We took salary hits and furloughs from the state for the next two years, but the ax is not yet done swinging from our Dane County partner. The children's garden is already a victim, though there may be a grant available some where that will enable us to continue the program.

Speaking of grants, the Madison Area Master Gardeners Association grant application form is included in the MAMGA newsletter and is up on the MAMGA website with a deadline for November 30. There are also \$50 school grants available and that deadline is October 30.

Fox Fire Gardens



So Long Fox Fire Gardens.....



Brown Bag Teleconferences

Held 12:00 noon to 1:00 p.m. at the **Dane Co. Extension Office**.
Please call Ann at 224-3721 to register.

October 23...Raspberry Selection and Management

Homeowners have long enjoyed the fruit from raspberries. Since there are various cultivars and seasonal selections available to extend the summer growing season: cultivar selection and plant management will be the topic of discussion.

Growing Raspberries in Wisconsin...A1610
Raspberry Pest Management for Home Gardeners... A2128
Home Fruit Cultivars for Northern Wisconsin...A2488
Home Fruit Cultivars for Southern Wisconsin...A2582



November 13...Landscaping to Attract Wildlife

Loss of habitat is a major threat to wildlife. As a result, if wildlife populations are to be successfully conserved, we must provide habitat for them on private lands. Habitat restoration is especially critical where urbanization and agriculture development has eliminated most natural areas. So providing backyard habitat for wildlife also is important for landscape aspect for the appreciation of nature. Join us as we address landscape approaches to improve wildlife habitat.

December 18...Fruit Crop Pest Management Tactics

Gardeners are disappointed when a portion or all of a small or tree fruit planting dies or the quality of fruit produced leaves a lot to be desired. Injury to the trunk, crown (area at the soil line) or roots generally is the primary cause of death to plants and can be caused by winter cold, poorly-drained soil, mouse and rabbit feeding damage, root and crown diseases and borers- alone or in combination-can all cause loss of plants. Reduced fruit quality is often the result of poor pest management during the growing season. Join us for a review of the problems and tactics to improve the situations.



Dane County Master Gardener Volunteer (MGV) Hours Recording Form for 2009

Reporting period: September 1, 2008 to August 31, 2009

This form is customized for Dane County UW-Extension MGV hours reporting.

MGV Students and Interns: Students/Interns should submit any hours earned through August 31, 2009 by October 1, 2009. MGV students and interns must complete 36 required volunteer hours *within one year of completing training* to become certified. No additional continuing education is required until *after* the first year post training.

Recertifying MGVs: Recertifying MGVs must turn in volunteer and continuing education hours earned from September 1, 2008 to August 31, 2009 by October 1, 2009. To recertify as a UW-Extension MGV each year, volunteers are required to donate a minimum 24 service hours and obtain 10 hours continuing education per year. Most volunteer activities will fall into one of the categories or miscellaneous listed below. Enter your **total hours** by category. Please see next page for more information about completing the table below:

Name:	
Address:	
City, State, Zip-code:	
Telephone:	
Email:	

Category	Date	Youth Ed (I worked with kids...)	Community Ed (I taught something...)	Support Services (I helped with...)	Continuing Ed (I learned some- thing...)
Dane County UW-EX Teaching Garden					
Dane County UW-EX Office Help					
Dane County UW-EX Horticulture Help Line					
Madison Area Master Gardeners Association					
<i>Wisconsin Garden Journal</i>					
UW – Arboretum					
West Madison Agriculture Research Station					
UW – Allen Centennial Gardens					
Olbrich Botanical Gardens					
Garden club (specify):					
Private association (specify):					
Private garden (specify) :					
Public activity (specify):					
Public class (specify):					
Public garden (specify):					
Public park (specify):					
Commercial establishment (specify):					
Miscellaneous (specify):					
TOTAL HOURS		hours	hours	hours	hours



Dane Co UW Extension
1 Fen Oak Ct
Madison WI 53718

Ann Munson, Editor
Phone 608-224-3721
Fax 608-224-3727
Email munson@co.dane.wi.us

University of Wisconsin, U.S. Department of Agriculture and Wisconsin counties cooperating. An EEO/AA employer, University of Wisconsin Extension provides equal opportunities in employment and programming, including Title IX and American with Disabilities (ADA) requirements.



UW Cooperative Extension

1 Fen Oak Court
Rm 138
Madison, WI 53718-8812
Address Service Requested

Master Gardener
Newsletter

Master Gardener Volunteers Reporting 2009 Hours
Volunteer hours (not including continuing ed hours Vol. hours may have been noted in previous newsletter) Thank you for reporting your hours!!

Hours to 36 Cathie Wood, Jack Wood, Diane Phelan, Jette Sanders, Cathy Cryor Burgweger, Amanda Mravic, Helene Pesche, Betty Lou Knight, Lynn Jacobson, Kathy Garlock, Wendy Margetis, Lisa Talbot, Jim Goodno, Peggy Mravic, Marty Petillo, Sandra Wysock, Cynthia Quinn, Ginny Hughes, Sandra Smith, Maureen O'Brien, Barb Lee, Kim Nelson, Pam Heaney, Maggie Carrao, Sandy Jensen, Ray Vogeler, Donna Freiman, Heidi Kuhman, Patricia Richardson, Lynn Fortner, Marc Nielsen, Bonnie Carlson, Catherine Gimse-Owen, Sharon White Gilson, Michael and Kathleen Simon (plus contributions of materials and employee labor \$1,500 value), Renee Abel-Collinge, Janet Zancck, Rod Bina, Bradley Johnson, Pauline Wyss, Marie Cady, Marian Kohler, Victoria Woodward, Karen Boehmke, Sharon Abraham, Darlene Nowak Barbara Feeney, Aislynn Miller, Beverly Konieczny, Joyce Hessefort, Ellen Hess, Audrey Faust, Lisa Summers, Luba Konowalskyj

Hours to 60 Jean Wadsworth, Susan Churchill, Ann Munson, Rebecca Martin, John Cannon, Tamara Neppi, Barbara Borders, Melinda Douglass, Gay Gross, Lynette Heath, Noreen Hubanks, Delores Wade Linda Marx, Nonalee Savoy, Brenna Wanous, Bobbie Fehr, Jan Moffa Debbi Harris, Jim Scorgie, Christine Fleming, Rob Wadsworth, Jay Anderson, Sandy Christianson, L. Jennifer Hahn, Jeanne Virosco, Dean Smith, Betsy True, Norma Heeren

Hours to 100 Libby Howting, Randy Harrison, Joann Hoffman, Neon Ringwood, Jane Rouleau, Mary Zins, Bonnie Mitchell, Larry Jensen, Jean Ness, Autumn Sabo, Ron Rosner, Pamela Sheeks, Barb Olsen, Sherry Shaft, Marsha Lisitza, E. LeRoy Bjerke, Beth Dolan, Vania Gillette, Paula Lenius

Hours to 150 Margaret Nelson, Nancy Schoenmann, Ruthann Dahl, Peg Wallace, Jane Gahlman, Ronna Kelley, Diane Chambers,

Hours to 190 Paul Fahrni, Wayne Hanson, Kim Bunke, Stephanie Bloomquist, Tammy Bieberstein

Hours to 277 Angie Roloff

Hours to 325 Elizabeth Ogren Erickson, Jane LaFlash, Diane Powelka

Hours to 400 Pat Benz Suick, Rita Thomas, Linda Grosz

Hours over 1000 Nancy Heiden